


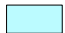

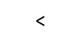


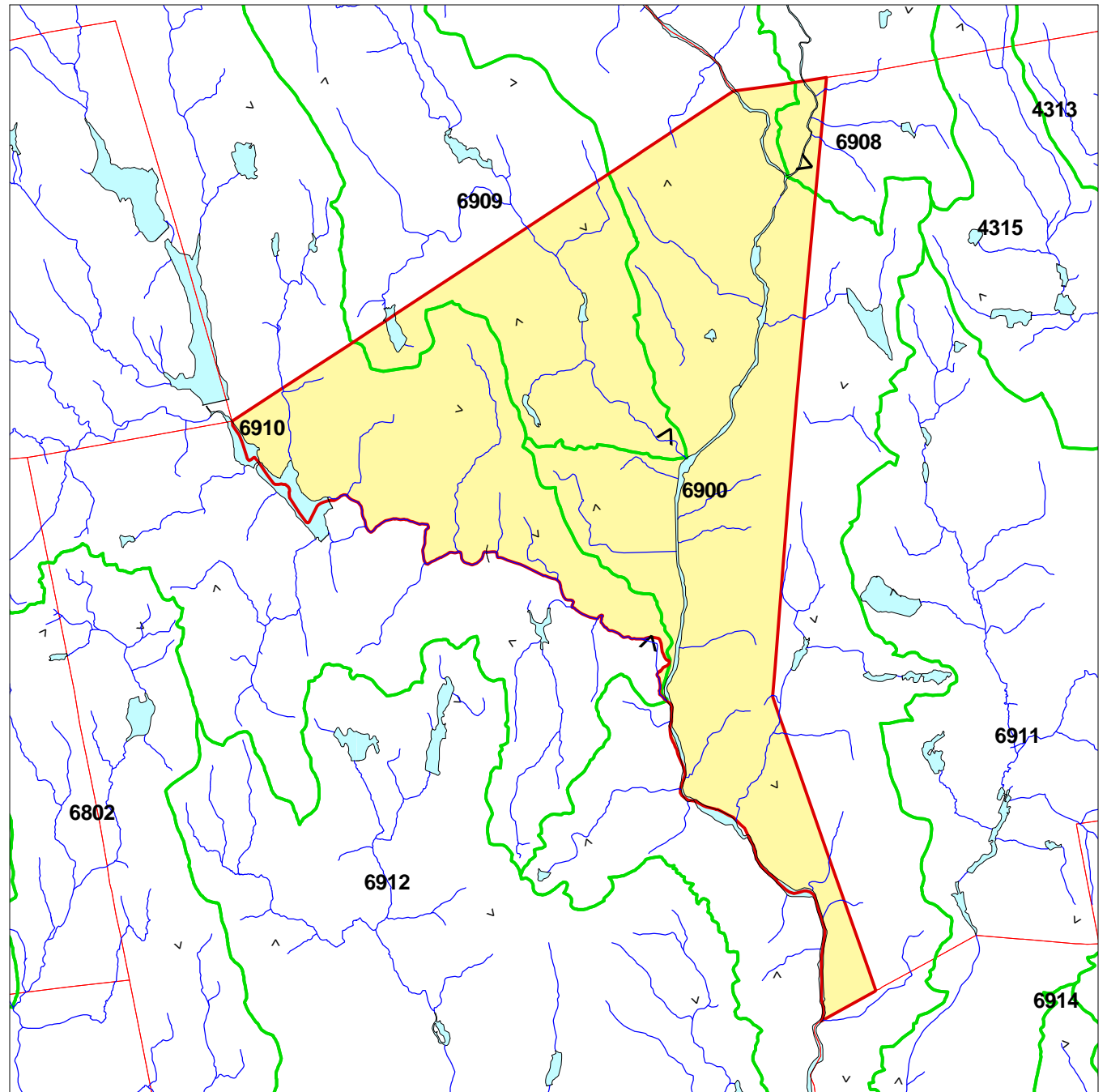
THOMASTON CONNECTICUT SUBREGIONAL BASINS AND SURFACE WATER FLOW DIRECTIONS

Explanation

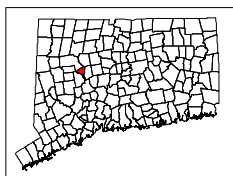
-  Town Boundary
-  Subregional Watershed Boundary
- 4201** Subrg. Basin ID# - as designated by CTDEP
-  Watercourse  Open Water
-  Basin Outlet
-  Surface Water Flow Direction

The table provides statistics for each subregional basin. Shown are the areas of the basin within the town, the percentage for that area, and the percent of the town covered by each basin.

Sbas_nc	AcresInTw	Percofb	Percoftwn
6900	4232.65	8.5	54.5
6908	136.25	1.3	1.8
6909	1436.26	33.9	18.5
6910	1968.31	13.6	25.3



Town Area: 7773 Acres

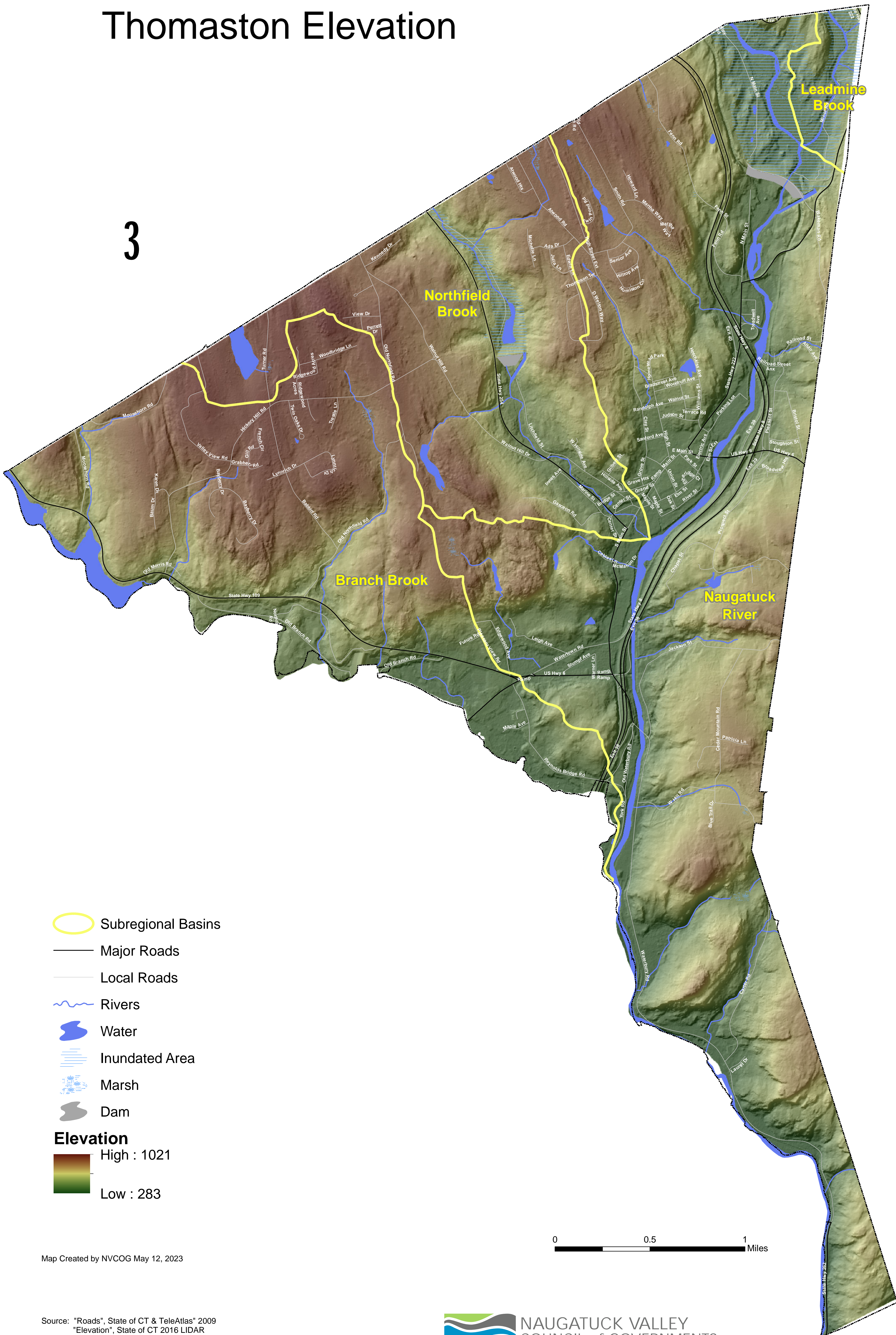



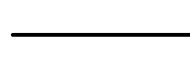








Digital layers provided by the CTDEP.
Map composed by the NEMO project.
For educational purposes only.

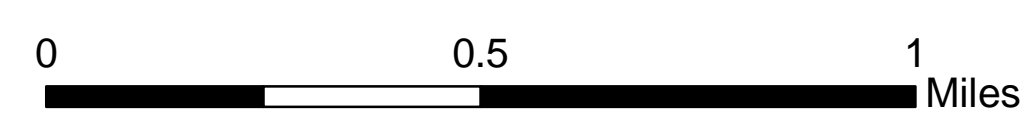


Thomaston Elevation

3



-  Subregional Basins
 -  Major Roads
 -  Local Roads
 -  Rivers
 -  Water
 -  Inundated Area
 -  Marsh
 -  Dam
- Elevation**
-  High : 1021
 -  Low : 283



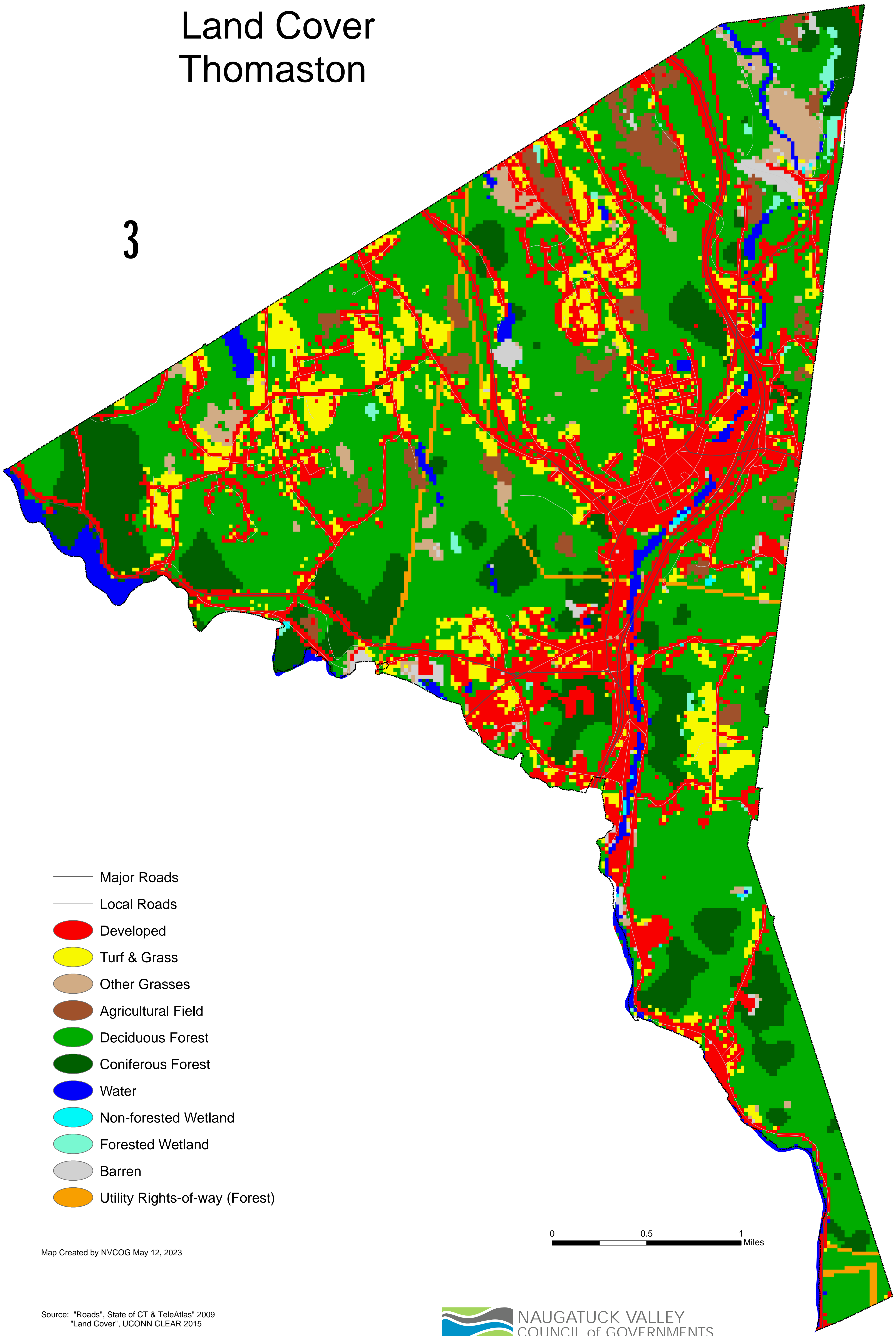
Map Created by NVCOG May 12, 2023

Source: "Roads", State of CT & TeleAtlas" 2009
 "Elevation", State of CT 2016 LIDAR

Document Path: S:\ArcGIS\projects\Municipal\Thomaston\Thom_Sustainable_CT\Thomaston_Elevation.mxd

Land Cover Thomaston

3



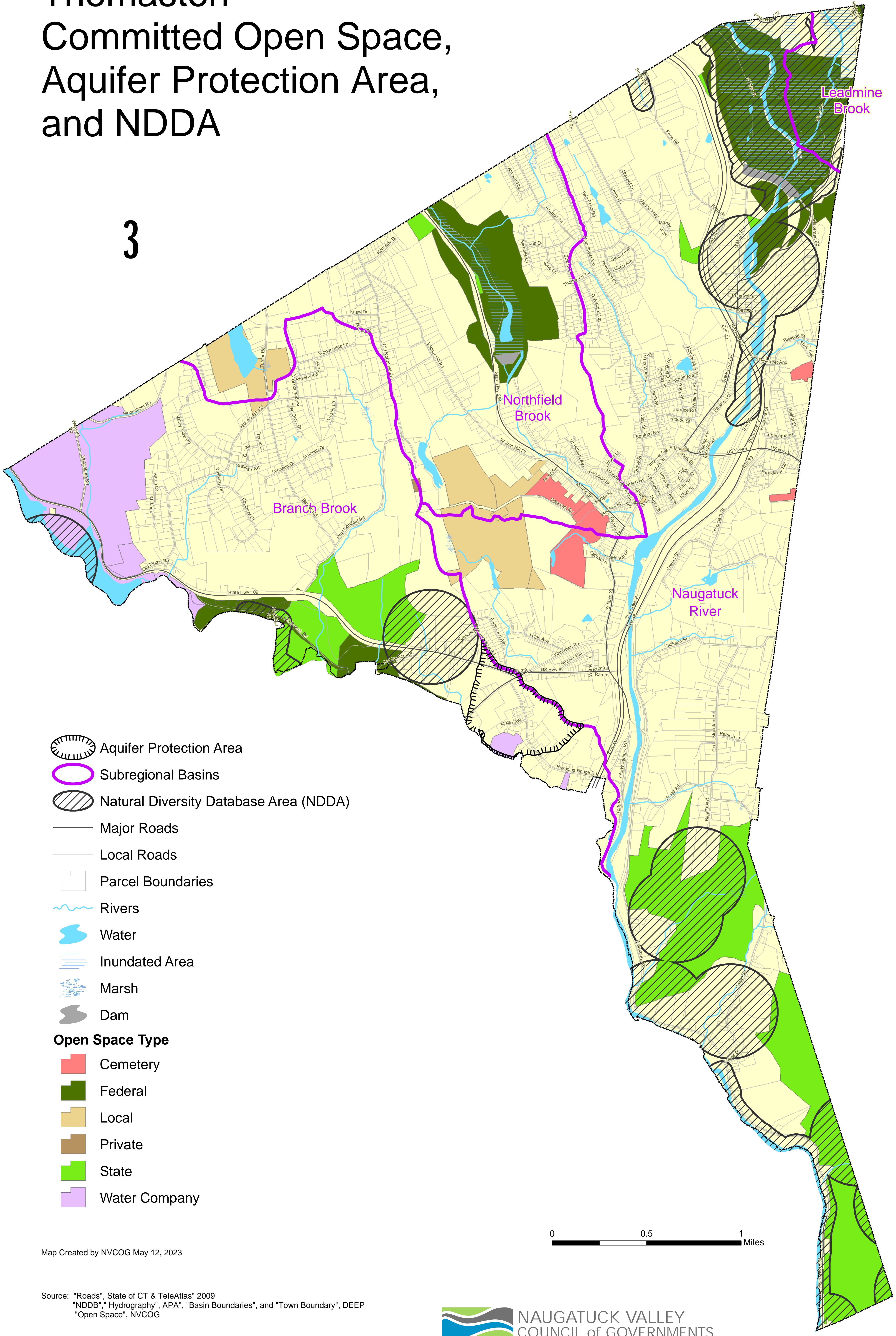
Map Created by NVCOG May 12, 2023

Source: "Roads", State of CT & TeleAtlas" 2009
"Land Cover", UCONN CLEAR 2015

Document Path: S:\ArcGIS\projects\Municipal\Thomaston\Thom_Sustainable_CT\Thomaston_Landcover.mxd

Thomaston Committed Open Space, Aquifer Protection Area, and NDDA

3



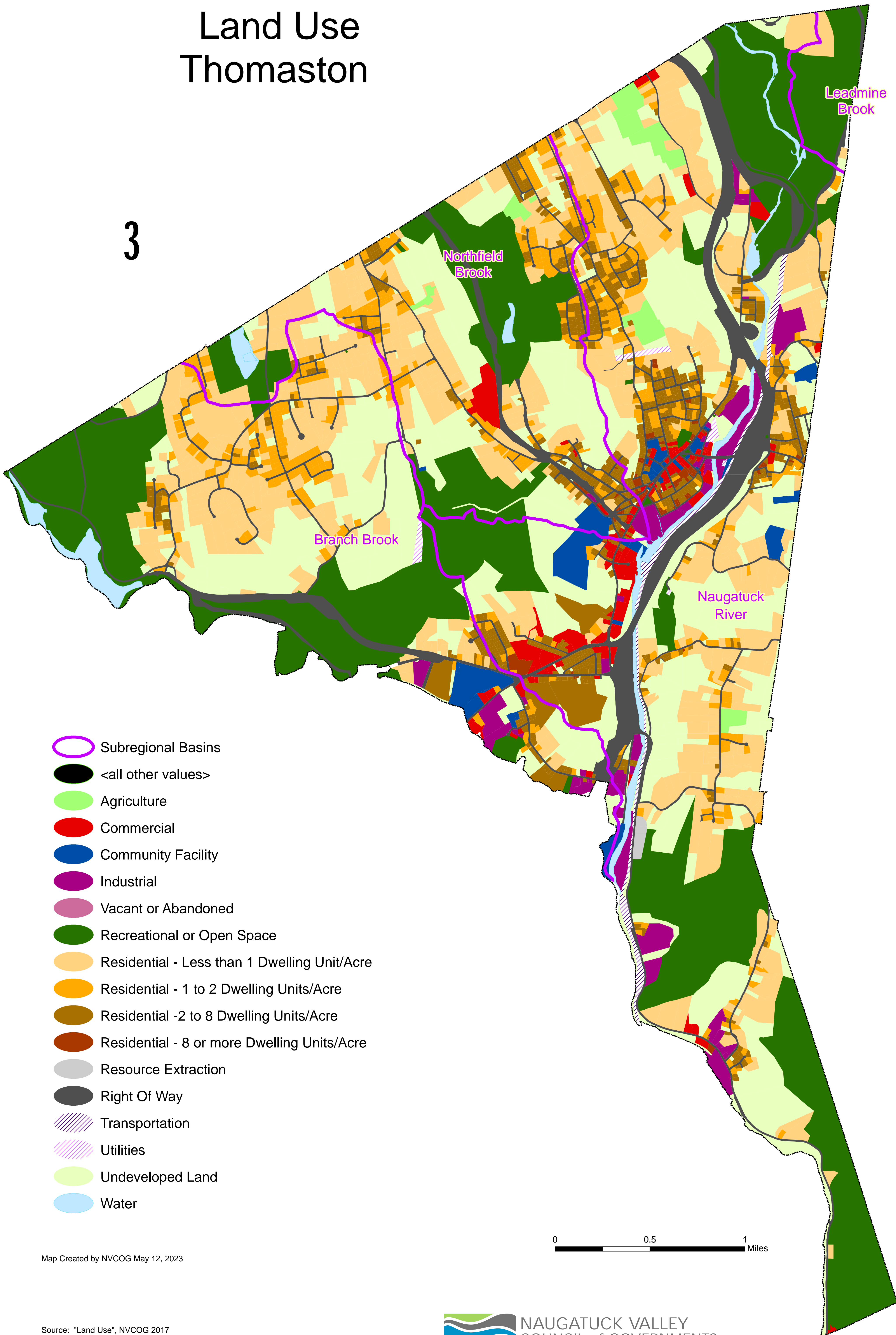
Map Created by NVCOG May 12, 2023

Source: "Roads", State of CT & TeleAtlas" 2009
 "NDDB", "Hydrography", APA, "Basin Boundaries", and "Town Boundary", DEEP
 "Open Space", NVCOG

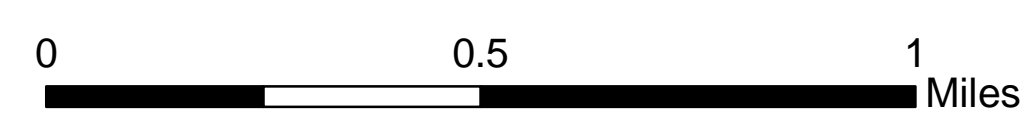
Document Path: S:\ArcGIS\projects\Municipal\Thomaston\Thom_Sustainable_CTY\Thomaston_OpenSpace_APA_NDDA.mxd

Land Use Thomaston

3



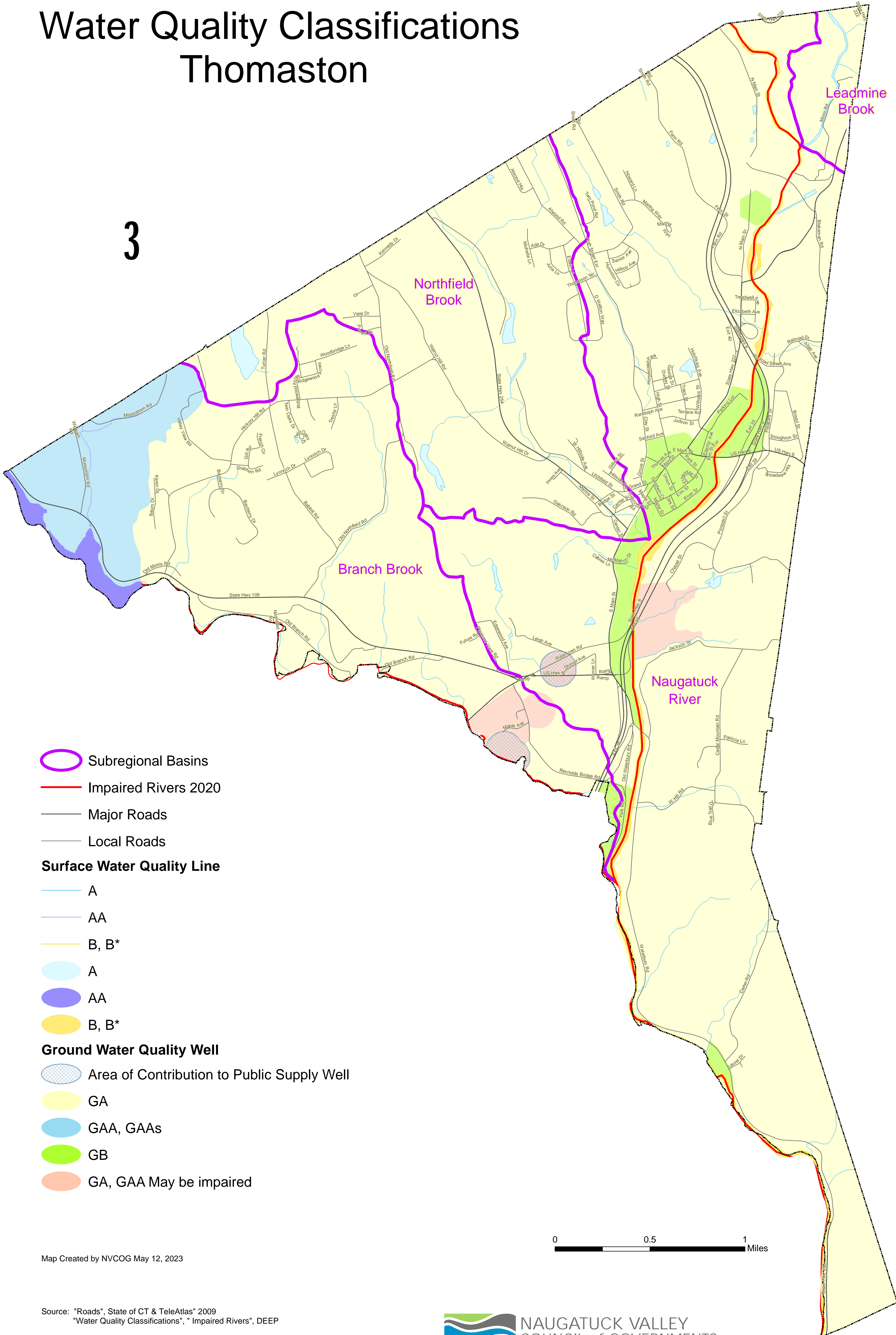
-  Subregional Basins
-  <all other values>
-  Agriculture
-  Commercial
-  Community Facility
-  Industrial
-  Vacant or Abandoned
-  Recreational or Open Space
-  Residential - Less than 1 Dwelling Unit/Acre
-  Residential - 1 to 2 Dwelling Units/Acre
-  Residential - 2 to 8 Dwelling Units/Acre
-  Residential - 8 or more Dwelling Units/Acre
-  Resource Extraction
-  Right Of Way
-  Transportation
-  Utilities
-  Undeveloped Land
-  Water











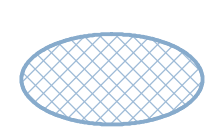






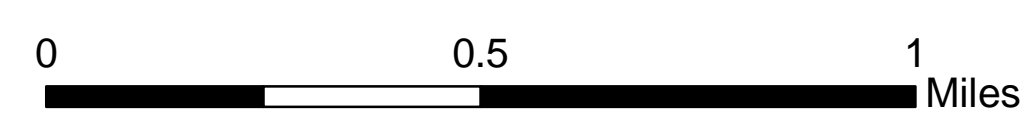
Map Created by NVCOG May 12, 2023

Water Quality Classifications Thomaston

3



-  Subregional Basins
-  Impaired Rivers 2020
-  Major Roads
-  Local Roads
- Surface Water Quality Line**
-  A
-  AA
-  B, B*
-  A
-  AA
-  B, B*
- Ground Water Quality Well**
-  Area of Contribution to Public Supply Well
-  GA
-  GAA, GAAs
-  GB
-  GA, GAA May be impaired



Map Created by NVCOG May 12, 2023

Source: "Roads", State of CT & TeleAtlas" 2009
"Water Quality Classifications", "Impaired Rivers", DEEP

Document Path: S:\ArcGIS\projects\Municipal\Thomaston\Thom_Sustainable_CT\Thomaston_Water Resources_classification.mxd