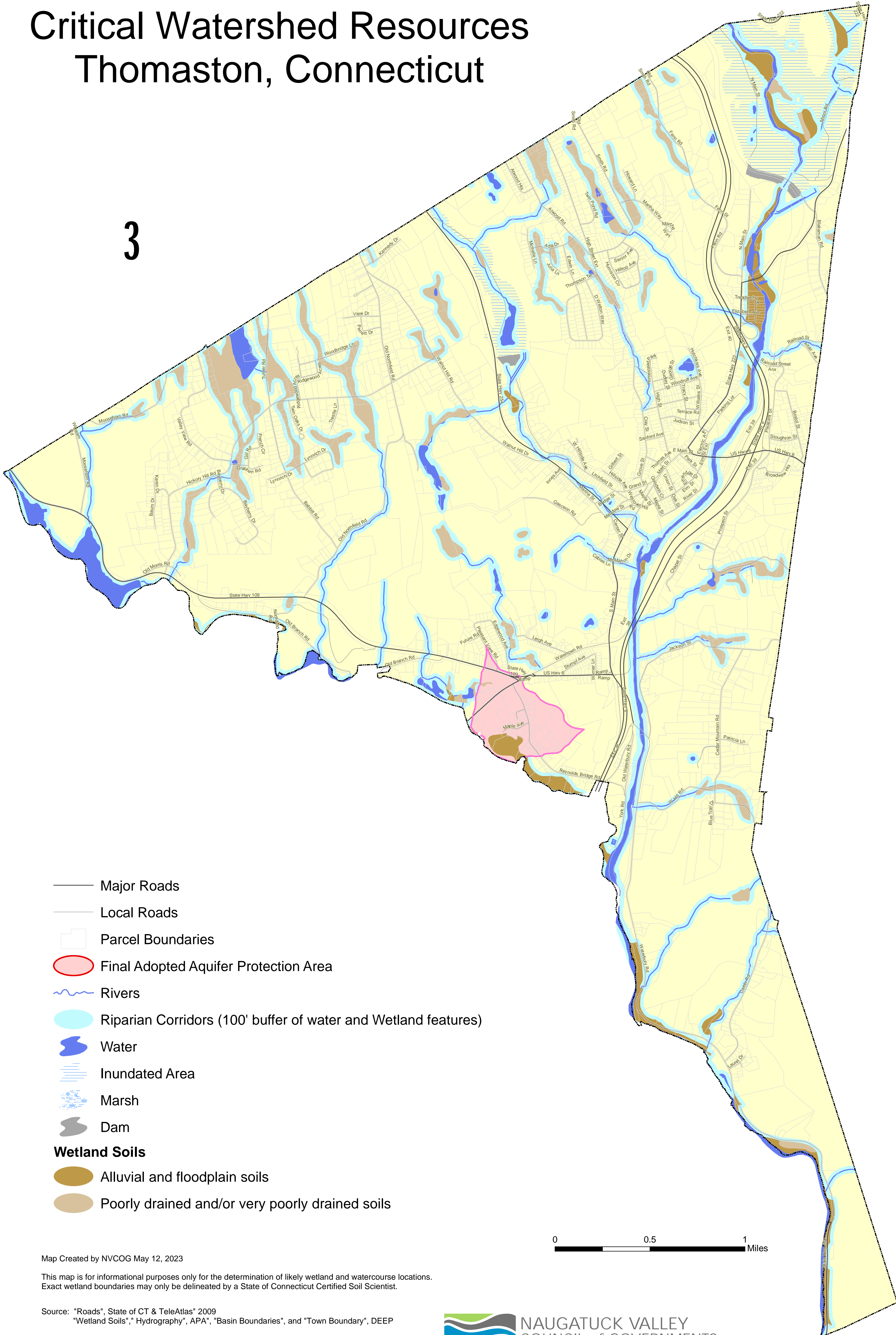
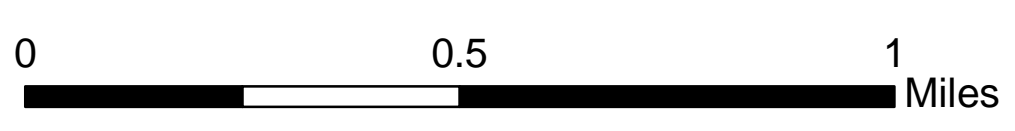


# Critical Watershed Resources Thomaston, Connecticut

# 3



- Major Roads
- Local Roads
- ▭ Parcel Boundaries
- ◻ Final Adopted Aquifer Protection Area
- ~ Rivers
- ◻ Riparian Corridors (100' buffer of water and Wetland features)
- ◻ Water
- ▨ Inundated Area
- ▨ Marsh
- ▨ Dam
- Wetland Soils**
- ◻ Alluvial and floodplain soils
- ◻ Poorly drained and/or very poorly drained soils



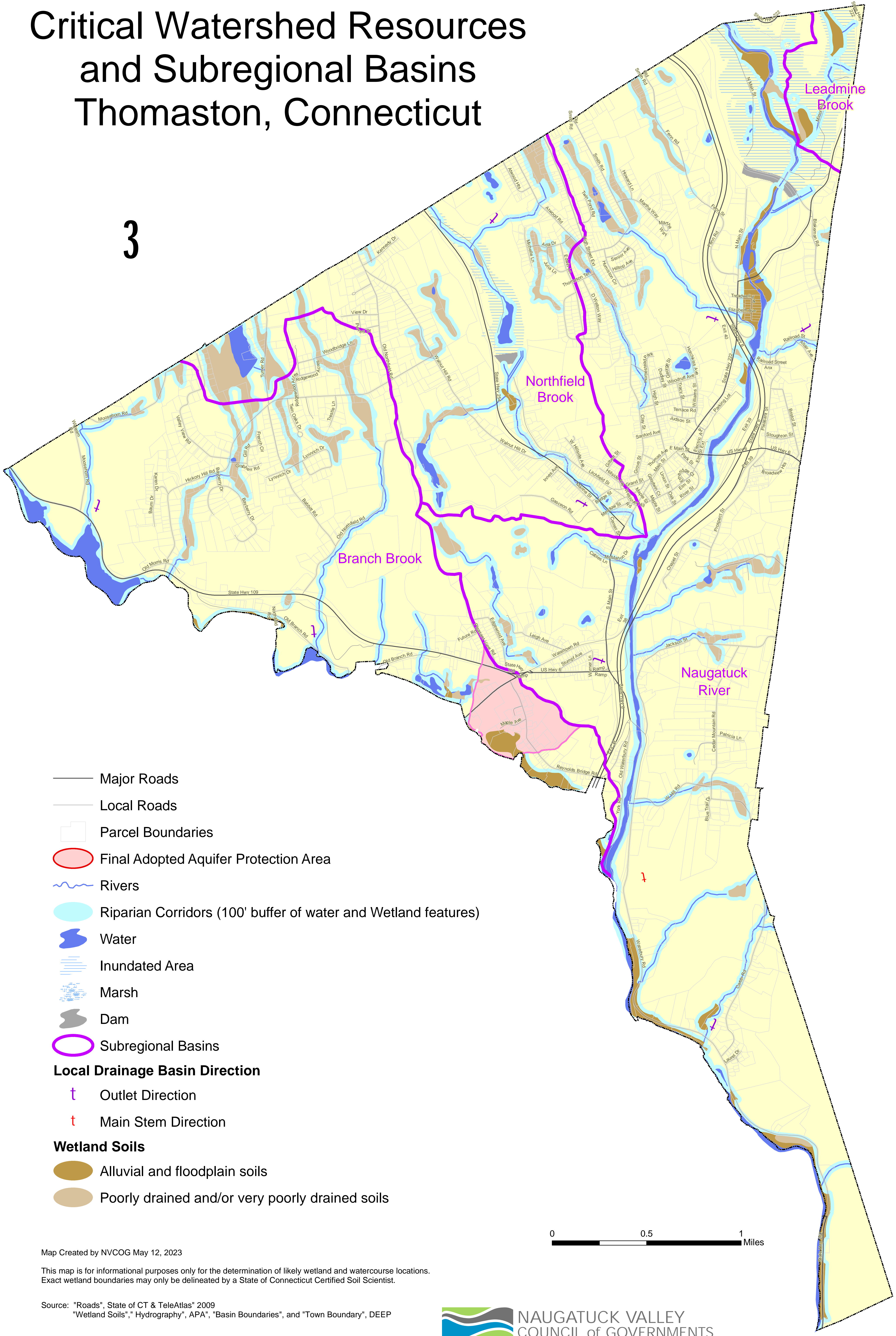
Map Created by NVCOG May 12, 2023

This map is for informational purposes only for the determination of likely wetland and watercourse locations. Exact wetland boundaries may only be delineated by a State of Connecticut Certified Soil Scientist.

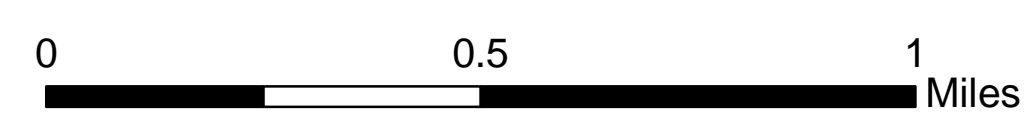
Source: "Roads", State of CT & TeleAtlas" 2009  
"Wetland Soils", "Hydrography", "APA", "Basin Boundaries", and "Town Boundary", DEEP

# Critical Watershed Resources and Subregional Basins Thomaston, Connecticut

3



- Major Roads
- Local Roads
- ▭ Parcel Boundaries
- Final Adopted Aquifer Protection Area
- ~ Rivers
- ▭ Riparian Corridors (100' buffer of water and Wetland features)
- ▭ Water
- ▭ Inundated Area
- ▭ Marsh
- ▭ Dam
- Subregional Basins
- Local Drainage Basin Direction**
- † Outlet Direction
- † Main Stem Direction
- Wetland Soils**
- ▭ Alluvial and floodplain soils
- ▭ Poorly drained and/or very poorly drained soils



Map Created by NVCOG May 12, 2023

This map is for informational purposes only for the determination of likely wetland and watercourse locations. Exact wetland boundaries may only be delineated by a State of Connecticut Certified Soil Scientist.

Source: "Roads", State of CT & TeleAtlas" 2009  
"Wetland Soils", "Hydrography", "APA", "Basin Boundaries", and "Town Boundary", DEEP